



Service and Accessories Brochure



Helmsman - The Complete Package



Contents

Who We Are	4
Our Process	6
Replacement Keys & Locks	7
Replacement Doors - Metal	11
Replacement Doors - Laminate	13
Replacement Doors - Glass	17
Accessories	19

A red brick building with a statue of a man on a pedestal in front of it. The statue is of a man in a blue shirt and white trousers, holding a large wheel. The building has several windows and a door. The background is a clear blue sky.

Who We Are

With over 5,500 square metres of offices and factory in Bury St Edmunds, our local workforce has over 40 years of experience working with architects, designers, specifiers, contractors and end-users helping them realise their most creative projects.

We are used to working across different sectors from leisure, healthcare and education through to commercial, retail, construction and industrial.

We can offer off-the-shelf products as well as bespoke solutions, be they aluminium, steel, glass or solid grade laminate. With a wide range of colours and styles, coupled with options from charging points to different locking systems, we provide the very best solutions for any project.

We supply throughout the UK and Ireland as well as across Europe and the Middle East and can offer supply only solutions to a fully managed turnkey service if preferred by the client.



Ground Floor
Unit 1 Helmsman
First Floor
Unit 2 Sporting & FC
Unit 3
Unit 4 Orbit
Unit 5 & 6 Access at rear



Design Stage

- Initial consultation
- Sector and building type
- Layout discussion
- Locker design
- Complementary products
- Site Visit

Fabrication

All our lockers are manufactured at our factory in Suffolk where we have long-serving skilled teams producing high-quality bespoke lockers and cubicles manufactured for each project.

Installation

Once the order is placed, the project is handed to the locker and cubicle installation manager who is responsible for overseeing the team that will install the lockers and cubicles. He works alongside the factory manager and ensures the products are manufactured on time and to the correct specification within the agreed time frame.

After Sales Service

To maximise optimal performance and the longest life cycle, we offer a complete range of after-sales care and service. This ranges from a regular maintenance contract to ad hoc repairs. We handle repairs and maintenance of lockers and cubicles too.

The background of the right side of the page features a blurred image of architectural floor plans with various colored lines and a portion of a calculator with a red display and blue buttons.

Our Process

Replacement Keys & Locks

Replacement keys are cut at our factory, here in Bury St Edmunds. Therefore we can provide a relatively quick turnaround time. Most key orders will be cut and dispatched within three working days. You can also purchase master keys for your lockers with a similar turnaround time.

Most of the key numbers can be found, either on the individual key or the barrel of the lock. The master series number is usually above the key number.

L&F coin lock key number can be found on the front of the barrel or stamped on the key.

We can supply a wide range of Cam locks for most UK manufactured lockers. All of our Cam locks come with two keys and can match the existing series.

Latch locks and Swivel locks are also available for garment dispensers & collectors.

Replacement locks should be replaced to match the original unless it matches the door cut out. Cam locks and swivel locks are interchangeable.

If you can not find the lock you're looking for, please contact us and, we will be happy to assist you with your requirements.



Standard Cam Lock



Standard Hasp Lock



Sudhaus 3 Digit
Combination Lock



L&F 2800 4 Digit
Combination Lock

*Other locks available, please consult Helmsman service department.

Digilock Sola3 Touch RFID Lock

- Touch RFID operation.
 - Powered by 4 premium AA batteries.
 - All-metal housing.
 - IP55 Rated.
 - Brushed nickel finish.
 - Cam locking mechanism.
 - Manage with electronic keys.
-
- Shared use - the locks are designed for day-use lockers. The user chooses an available locker and operates it with self-selected user credentials, once vacated it becomes available for different user.
 - Assigned use - the locks are designed for lockers that are for private use. The user is assigned a locker and operates it with their assigned user credential.
 - Solar3 Touch RFID locks work with iClass and Mifare standards operating at 13.56 MHz frequency.





Codelocks

KL1100

RFID Lock

- Powered by 4 x 1.5 volt AA batteries (supplied).
- Private and public functions.
- Connect to 5V micro USB power source for temporary power
- Metallic silver or gloss black.
- Card types - Master, Technician, User, Initialisation, Block and Audit - Supports MIFARE® Classic 1k.
- Locally manage individual locks.
- Supports Private and Public Functions.
- Master Card.
- Up to 50 User Cards per lock.
- Up to 10 Technician Cards per lock.
- Software available to download from the Codelocks Portal, this software allows Card Clients to be created and managed remotely.
- Offline or cloud based options available. License purchase required.

Replacement Doors - Metal

Please state lock type when ordering. Lock and escutcheon plate are not included with new doors. Exchanging your essential metal locker doors may require a detailed photo or a site survey depending on the specifications of your locker.

We can exchange other metal locker doors, such as garment dispensers, garment collectors, metal Z lockers and modular lockers. All we need is your locker specifications.

Colour options for the metal door are our standard range. We can match any RAL colour subject to an additional charge. Metal RAL colour samples are available on request.



Garment dispensers and
collectors with Cam locks



Essential metal lockers
with Cam locks

Replacement Doors - Laminate

Please state lock type when ordering. Lock and escutcheon plate are not included with new doors. A detailed photo or a site survey may be needed depending on the project size.

Replacement laminate doors can be replaced on either laminate heavy-duty lockers or our leisure lockers. Please specify which type of locker you have and if it is in a wet or dry area. Laminate Z locker doors can also be replaced. Please specify sizing when ordering.

Colour options for the laminate door are our standard range.



Leisure Lockers with Coin
return locks



Laminate Lockers with
Diamond Hasp lock

Replacement Doors - Glass

Please state lock type when ordering. Lock and escutcheon plate are not included with new doors. A detailed photo or a site survey may be needed depending on the project size.

Ordering glass may take longer than other materials. Colour options for the glass door are our standard range. To match other colours please consult Helmsman service department.



Glass lockers with Ojmar
OTS basic locks



Ojmar OCS combination
lock

Accessories

We carry and supply a wide range of accessories for all our ranges whether it's for a new project or to replace broken or missing items.

Clients can specify a wide range of carefully chosen high-quality accessories from standard locks to contactless locking systems.

Selected for superior styling with practical durability, our accessories add the perfect finishing touch to any changing room, washroom or locker room. Our main lock supplier is Ojmar Intelligent Locking Systems and they can supply locking systems suitable for both wet and dry environments and different uses and types of user.

Number plates and numbers

- Maximum of four digits per number plate
- Brail numbering.

Key fobs

- Many different colours to choose from to align with your lockers numbering system.

Wrist straps

- Many different colours to choose from, wrist straps can come numbered or unnumbered depending on what you prefer.

Tokens

- Tokens can be used for coin return/retain locks.

Padlocks

- We can supply padlocks suitable for Hasp locks.
- Standard padlock with a key
- Dial combination padlock



Wrist straps



Standard padlock

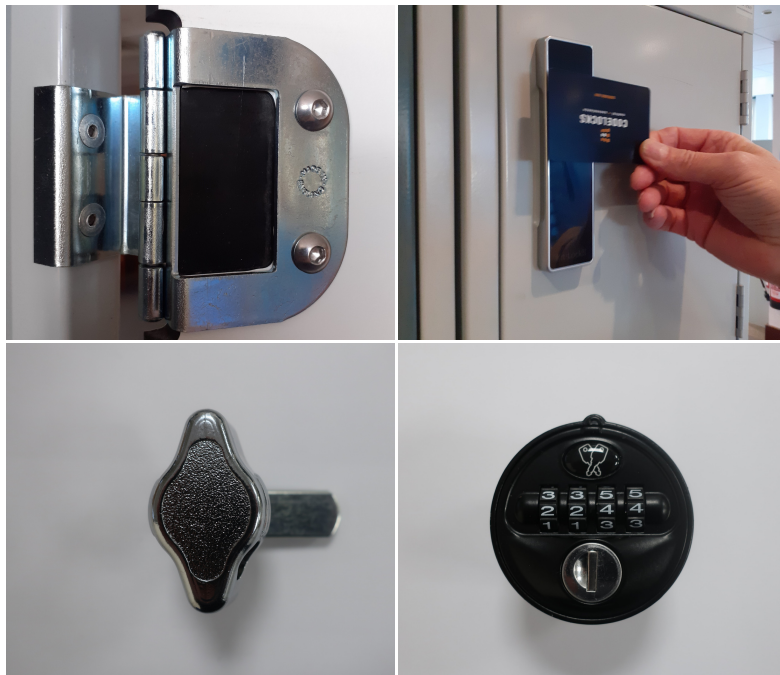


Numbered key fob



Number plate and Braille
numbering

*Other accessories and parts available, please consult Helmsman service department.



Whether you need spare parts or complete refurbishments, Helmsman will provide you with the best solution.

**1 Northern Way
Bury St Edmunds
Suffolk
IP32 6NH
(+44) 01284 727626
service@helmsman.co.uk
www.helmsman.co.uk**

