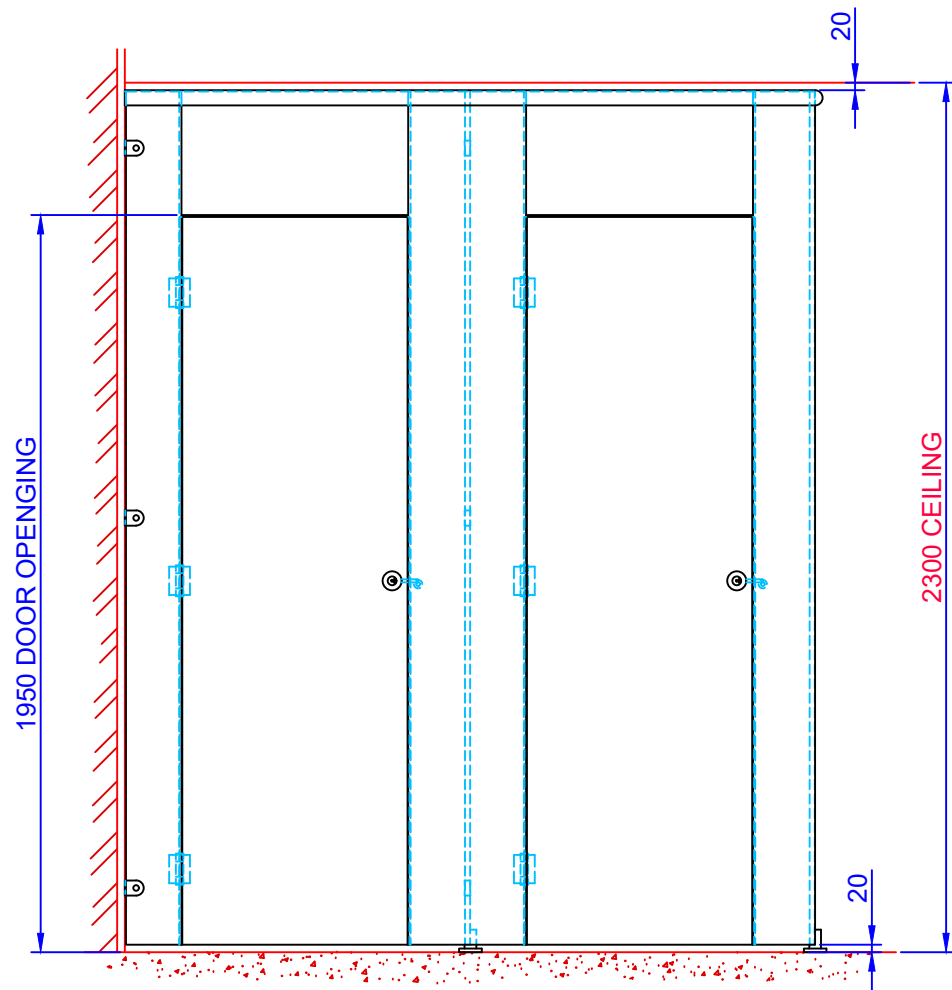


SCALE 1:2
LOCK VIEW SHOWING DOOR
AND FASCIA OVERLAP

IMPORTANT:
THE FLOOR AND CEILING MUST BE FLAT AND
PARALLEL. THERE IS ONLY LIMITED ADJUSTMENT IN
THE FEET, SO ANY UNEVENNESS IN THE FLOOR WILL
CAUSE THE PANELS NOT TO SIT CORRECT.

FLUSH FINISHING
FASCIA AND DOORS



HEAD RAIL
CEILING MUST BE FLAT AND
PARALLEL TO THE FLOOR.
SEE NOTE

FLOATING FOOT

FLOOR MUST BE FLAT AND
PARALLEL TO THE CEILING.
SEE NOTE

01	INITIAL ISSUE	22.09.21	PJH
ISSUE	CHANGE NOTE / DESCRIPTION	DATE	BY
DRAWING / PART NUMBER: TECH-CB-1002			
TITLE / DESCRIPTION: EXAMPLE OF A FLOOR TO CEILING CUBICLE.			
CUSTOMER: N.A.			
CUSTOMER PROJECT: N.A.			
DRAWN BY:	PJH	DATE:	22.09.2021
CHECKED BY:	PJH	DATE:	22.09.2021
SCALE:	1:20	SHEET	1 OF 1
<small>Helmsman Storage Solutions 1 Northern Way Bury St. Edmunds Suffolk, IP32 6NH Tel: +44 (0) 1284 727600 Fax: +44 (0) 1284 727601 Email: sales@helmsman.co.uk Web: www.helmsman.co.uk</small>			
<small>THIS DOCUMENT CONTAINS INFORMATION THAT IS CONFIDENTIAL AND PROPRIETARY TO HELMSMAN. THIS DOCUMENT WILL NOT BE COPIED OR DISCLOSED TO OTHERS WITHOUT THE WRITTEN CONSENT OF HELMSMAN.</small>			
DO NOT SCALE IF IN DOUBT, ASK!		3rd ANGLE PROJECTION	A3