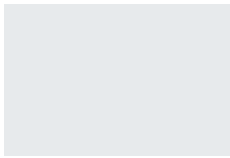




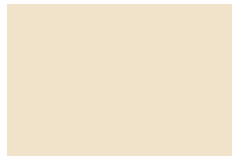
LOCKERS & CUBICLES LAMINATE COLLECTION



LOCKER DECORS 10mm Thickness



410 • Ice White
• Sei



813 • Beige Manhattan
• Sei



486 • Blue Lake
• Sei



460 • Green Grass
• Sei



839 • Green Water
• Sei



860 • Yellow Piper
• Sei



431 • Red
• Sei



427 • Fuschia
• Sei



425 • Lilac Erica
• Sei



801 • Blue Tempest
• Sei



499 • California Blue
• Sei



859 • Blue Pottery
• Sei



475 • Pearl Grey
• Morbida



568 • Silver Minimi
• Mandarin



477 • Grey
• Sei



870 • Grey Cloud
• Sei



2810 • Cement
• Climb



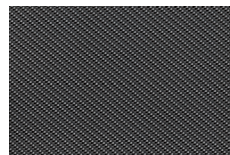
888 • Brown
• Morbida



2811 • Mongolia
• Climb



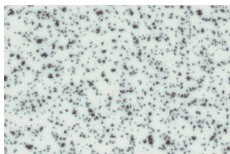
879 • Graphite Grey
• Sei



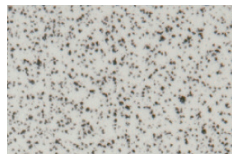
571 • Black Carbon
• Papier



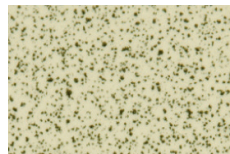
421 • Black
• Grainwood



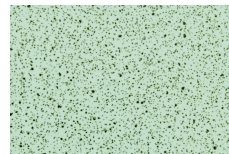
236 • Spring White
Speckle • Sei



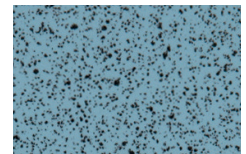
9947 • Light Grey
Speckle • Sei



9434 • Beige Manhattan
Speckle • Sei



9946 • Caribbean
Green Speckle • Sei



9949 • Blue Tempest
Speckle • Sei



619 • Grey Maple
• Sei



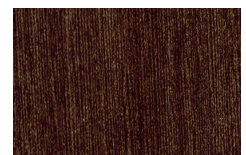
1666 • American
Beech • Sei



1661 • Mountain Oak
• Sei

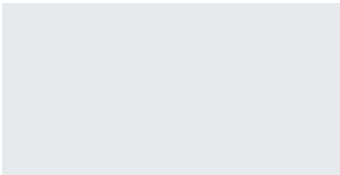


616 • Walnut
• Sei

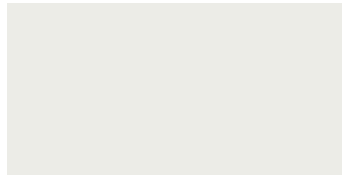


312 • Wenge
• Sei

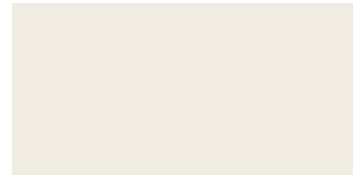
CUBICLE DECORS



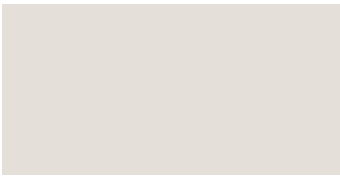
410 • Ice White • Sei



406 • Spring White • Sei



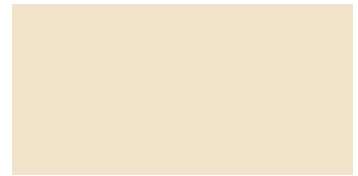
810 • Mini White • Sei



409 • Cream • Sei



414 • Sand • Sei



813 • Beige Manhattan • Sei



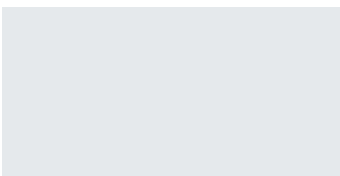
1816 • Sahara Beige • Sei



893 • Umber Brown • Sei



897 • Volcano Brown • Sei



854 • Silver Blue • Sei



478 • Light Grey • Sei



475 • Pearl Grey • Sei



1819 • Mountain Grey • Sei



870 • Grey Cloud • Sei



477 • Grey • Sei



871 • Dark Grey • Sei



879 • Graphite Grey • Sei



421 • Black • Sei



1850 • Lime • Sei



441 • Green Citron • Sei



460 • Green Grass • Sei

SAMPLES

Should you require samples of any of these decors,
please contact the **Office** on **01284 727626**
or email us: sales@helmsman.co.uk

Patterns shown are reproduced as accurately as
possible within the constraints of the printing process.

Key: Ref code • Colour • Finish

CUBICLE DECORS



1852 • Olive Green • Sei



845 • French Green • Sei



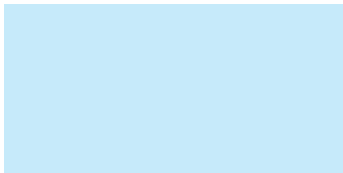
486 • Blue Lake • Sei



857 • Heavenly Blue • Sei



1860 • Pacific Blue • Sei



487 • Blue Dust • Sei



499 • California Blue • Sei



838 • Primary Blue • Sei



859 • Blue Pottery • Sei



1804 • Dark Blue • Sei



425 • Lilac Erica • Sei



1827 • Violet • Sei



1881 • Orchid • Sei



423 • Purple Madras • Sei



498 • Purple Lily • Sei



1883 • Aubergine • Sei



860 • Yellow Piper • Sei



861 • Yellow Pop • Sei



835 • Orange Canyon • Sei



427 • Fuschia • Sei

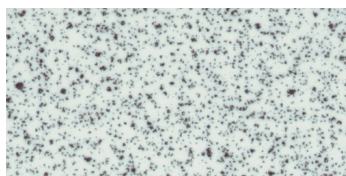


431 • Red • Sei

COLOUR ASSISTANCE

Please see our table on the back page for colour comparisons and light reflective values, from Pantone to RAL colour values - also shows stocked sheets sizes available for that colour range.

SPECKLES / MINIMI



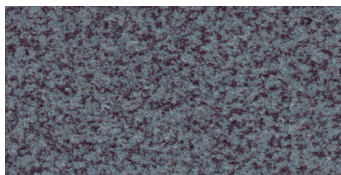
236 • Spring White Speckle
• Sei



568 • Silver Minimi
• Mandarin



567 • Light Grey Minimi
• Mandarin



563 • Mid Grey Minimi
• Mandarin

TEXTURES



SEI (with protective film): a fine-grained texture offering a low glare surface and a limited resistance to finger marks

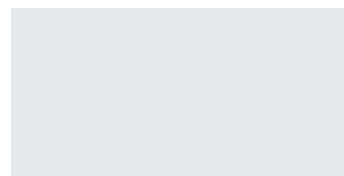


MANDARIN (without protective film): an orange peel effect texture with good scratch resistant properties



LUCIDA (with protective film): a gloss texture recommended for vertical use only

GLOSS



410 • Ice White • Lucida



431 • Red • Lucida



879 • Graphite • Lucida

WOODGRAINS



619 • Grey Maple
• Sei



1666 • American Beech
• Sei



1661 • Mountain Oak
• Sei



616 • Walnut
• Sei



631 • Pleated Teak
• Sei



1612 • Sumatra Teak
• Sei



1388 • Grey Zebrano
• Sei



312 • Wenge
• Sei

OUR LAMINATE CUBICLES AND LOCKERS COLLECTION

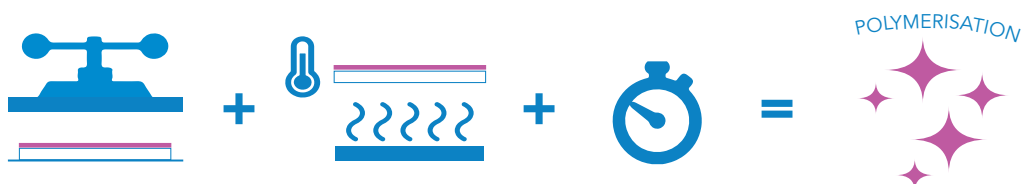
We partner with Abet, Europe's largest manufacturer of high pressure laminates based in Bra in Northern Italy producing over 22,400,000 square metres of high pressure laminate every year.

Abet Laminati's High Pressure Compact Grade Laminate is a hardwearing, durable and aesthetic solution for cubicle and locker applications with excellent resistance to impact, scratches and abrasion.

With a wide range of colours, finishes and textures available, we are able to offer architects and designers many options to realise their most creative schemes.

- They are ideal for use in areas of high moisture and humidity such as leisure centres and swimming pool changing rooms as its solid core construction means there is no risk of peeling, cracking or delamination.
- Recommended for use on in high traffic areas such as in schools, hospitals, airports and other areas subject to heavy use and wear.
- Its non-porous fabrication and edging also make it ideally suited for use in sterile and hygienic environments including hospitals, laboratories and food preparation areas.

HIGH PRESSURE LAMINATE MANUFACTURE



PROPERTIES



Sturdy, shock and scratch resistant



Excellent performance to fire



High resistance to water and steam



High resistance to chemicals/solvents



Antistatic properties



Wide range of colours available



Easy to fabricate



Easy to clean

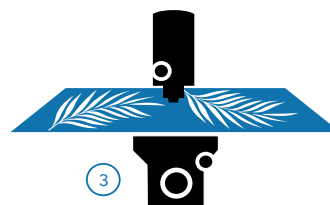


Excellent hygienic properties



Manufactured to EN 438:2

DIGITAL PRINT



CARE AND MAINTENANCE

Light dirt or stains can be removed easily with warm water. Stubborn marks should be removed using a non-abrasive cream cleaner or mild domestic bleach. Avoid harsh abrasives or scouring powders. Grease marks can be removed with a proprietary paint and graffiti remover.

We strongly recommend that all HPL products are stored, conditioned and fabricated in accordance with BLFA guidelines.



OTHER:

Helmsman also offers a comprehensive range of lockers in other materials and complementary products including:

Metal Lockers

Glass Lockers

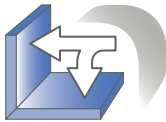
Seating

IPS and Vanity Units

Helmsman is the only manufacturer of a complete range of lockers and cubicles in the UK. For over 40 years, the company has been designing, supplying and installing its products for sectors from leisure through to education, healthcare, commercial, retail, hospitality and industry. Manufactured at our company's office and factory at Bury St. Edmunds, we supply throughout the UK, Ireland as well as mainland Europe and the Middle East.

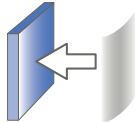
HIGH PRESSURE LAMINATE

HGP:



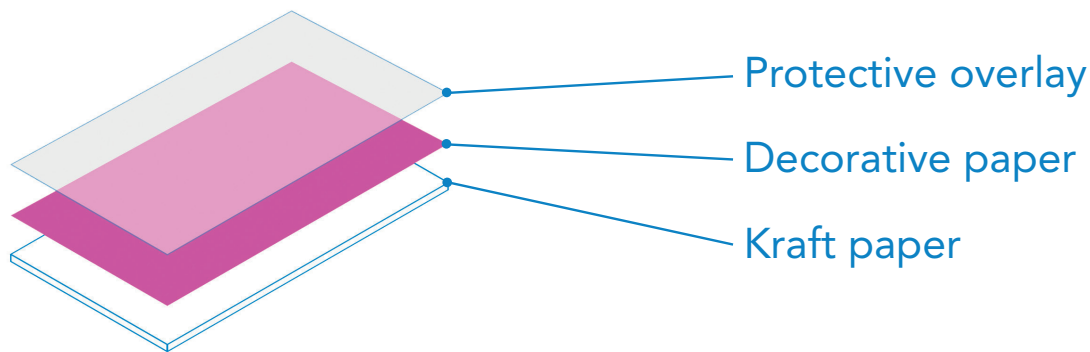
Horizontal Grade Postforming:
Sheet laminate for bonding onto flat or postformed surfaces for horizontal/vertical applications

VGP:



Vertical Grade Postforming:
Sheet laminate for bonding onto flat or postformed surfaces for vertical applications only

- High Pressure Laminate 0.8mm postforming grade can be fire rated by special order (when bonded with other FR materials).
- It is a competitive durable and hardwearing solution which can be postformed as required.
- Particularly recommended for use on vanity units and IPS panels.



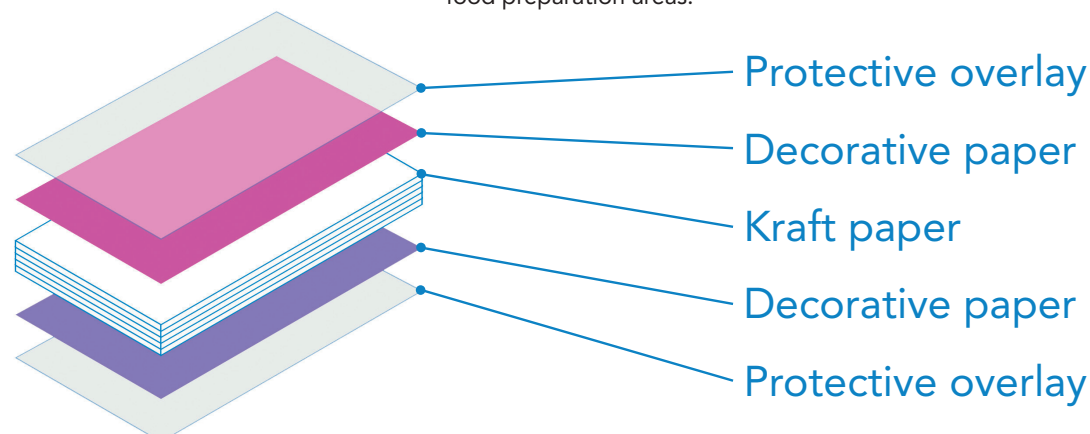
COMPACT GRADE LAMINATE

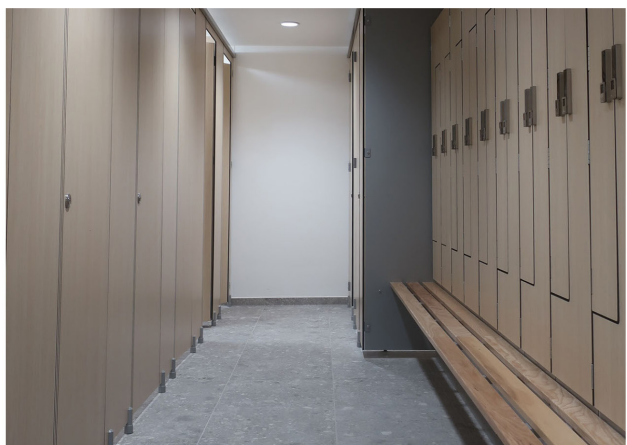
CGS:



Compact Grade Standard:
Compact grade laminate for use as flat self-supporting panels for horizontal/vertical applications

- Compact Grade Laminate meets Euroclass B (12mm) or Euroclass C (10mm) and is ideal for use in areas of high moisture and humidity as its solid core construction means there is no risk of peeling, cracking or delamination.
- Particularly recommended for use on cubicles, washrooms and lockers in high traffic areas (such as in schools, hospitals and airports) and in places of high humidity (such as leisure centres and swimming pool changing rooms).
- Its non-porous fabrication and edging make it ideally suited for use in sterile and hygienic environments including hospitals, laboratories and food preparation areas.





Helmsman Lockers & Cubicles
1 Northern Way, Bury St Edmunds, Suffolk IP32 6NH
Telephone: 01284 727626
Email: sales@helmsman.co.uk www.helmsman.co.uk

ABET LAMINATI 
Unlimited selection