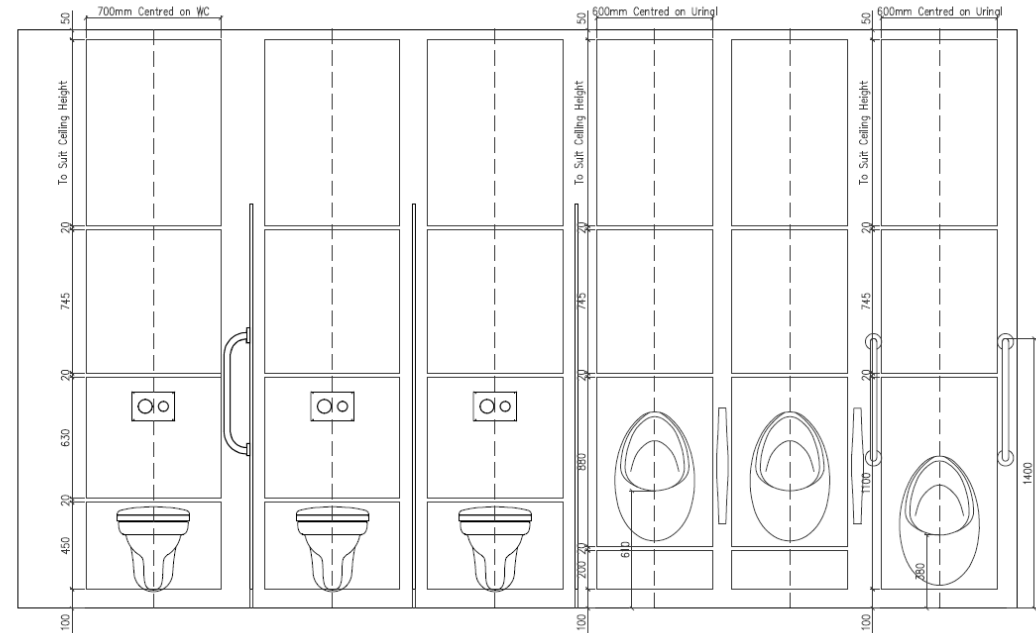


# IPS Frames Specification



- Our framed IPS (Integrated Plumbing System) can be manufactured from timber or zinc plated wet spec metal offering a complete solution for projects where concealed plumbing and services are required.
- The size of the frame and IPS panels are manufactured to the size of the space and to suit the pipework behind the panels. Max height up to 3000mm.
- Ideal for toilets, urinals and basin units.
- Complete with accessible 'push pull' or 'lift' system.
- Decorative panels are manufactured from 12 mm solid grade laminate with a wide range of colours to choose from.
- Suitable for both wet and dry areas in all sectors.



1 Northern Way  
Bury St Edmunds  
Suffolk  
IP32 6NH  
(+44) 01284 727626  
sales@helmsman.co.uk  
www.helmsman.co.uk